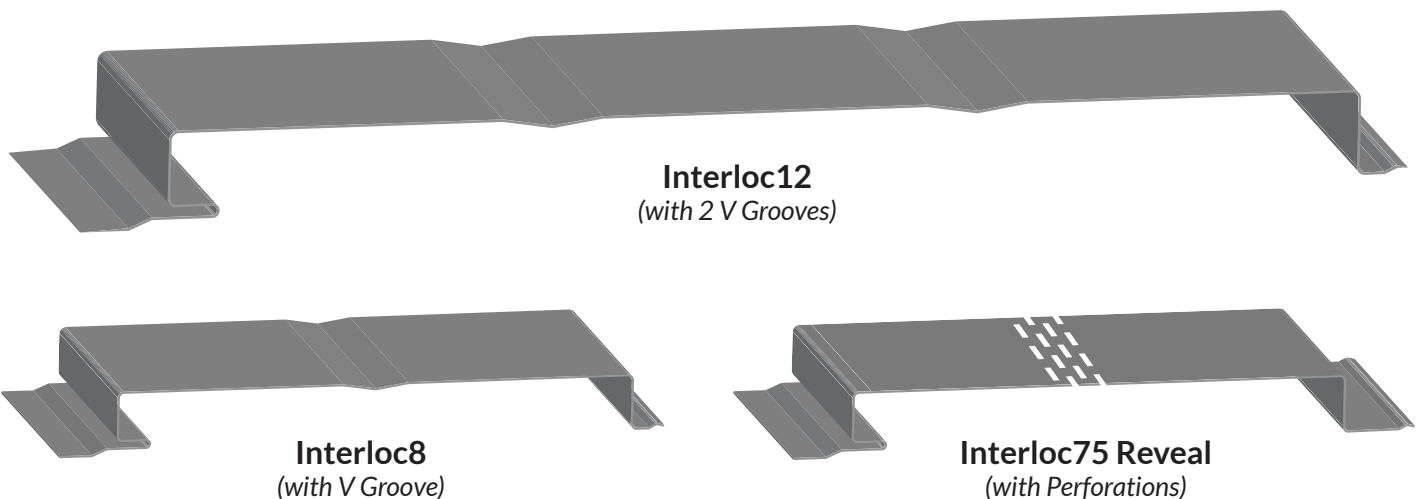




Interloc Installation



The Interloc Wall & Soffit Panel System is a smooth wall panel that can be installed both horizontally and vertically, and is commonly used as a soffit panel with perforations. This hidden fastener standing seam panel comes in a variety of coverages with options for flush wall or 1/2" reveal.

Depending on the coverage chosen, the Interloc Panel comes in a flat pan, with v grooves, with perforations, or a combination of these options. Available in our Standard 24 gauge colour series, this panel can also be produced in our Woodgrain Series, Textured Series, and PVDF Kynar Colours.

Interloc Panel Trims: Refer to our 1" Trim Collection for all trim profiles associated with Interloc Panels

Installation Drawings: Basic installation drawings are attached to this document. Specific details and further information may be required as per site requirements.

Obstacle Removal

Remove downspouts to create a clear workspace for installing the siding. Trees, shrubs and any other objects that could get in the way should also be safely removed. Remove windowsill extensions where necessary.

Wall Preparation

Ensure that the surface is even. You may have to shim out low places in the plane of the wall. The working surface should be secured with fasteners, and clear of debris such as old paint, putty or caulking buildup. Make sure the house wrap or water barrier is installed according to building codes before installing the siding over top.

Product Preparation:

Remove the protective film prior to installation. Review panel lengths in reference to the cut sheet.

Cutting:

Because the underside is flatter, it is recommended that roofing and siding be cut from this side. A power saw, nibbler, snips or profile shear may be used. Be sure to clean metal filings from off the panels to prevent unsightly stains.

Storage Instructions:

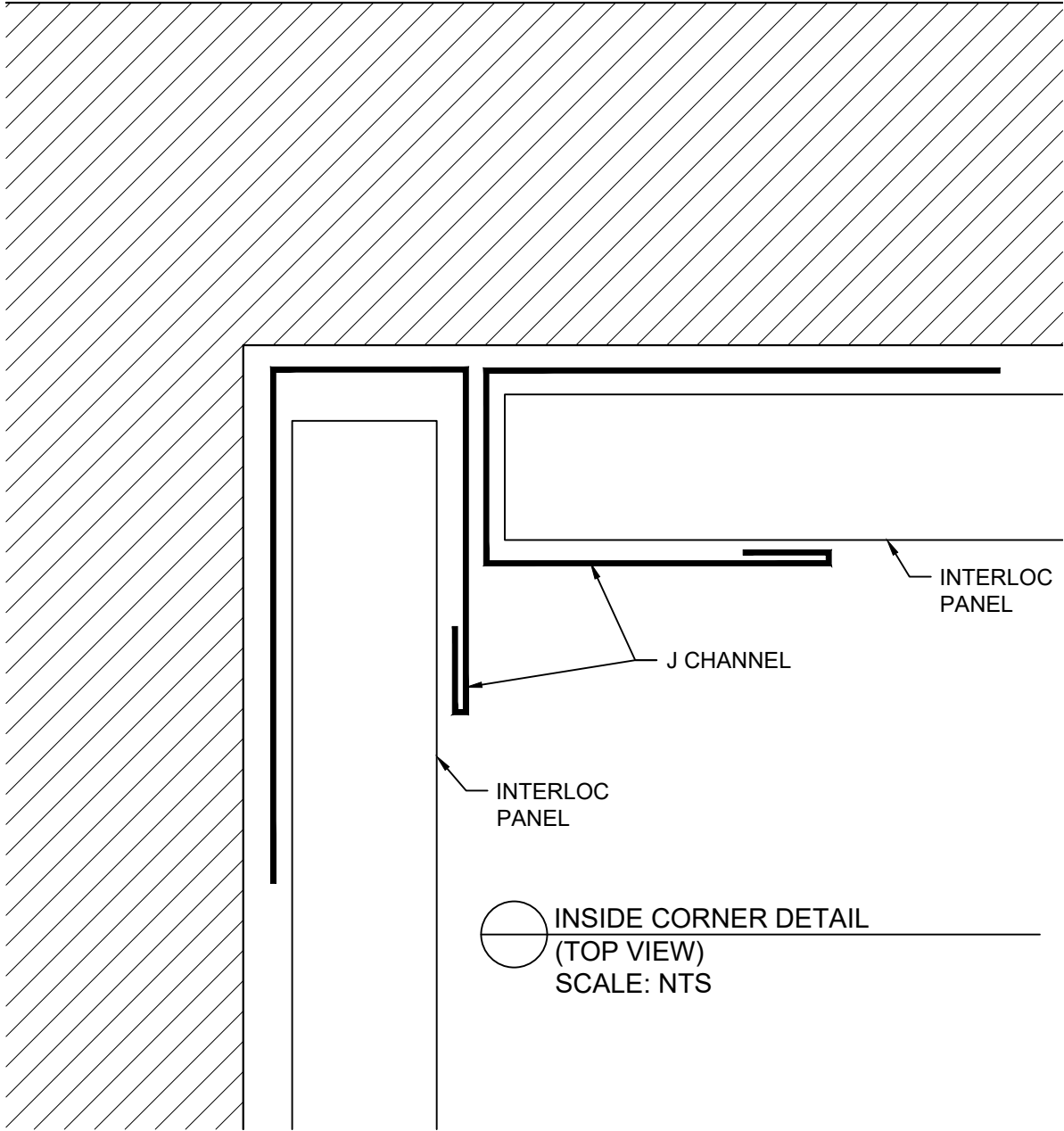
If the panels are not going to be used immediately, they should be stored in a dry well ventilated area. If it is not possible to store the material inside, block up the panels to allow air movement around the packages. Also raise one side of the bundles to ensure positive draining, and use a good quality cover (other than plastic) anchored loosely to protect the material and still allow ventilation. Store away from aggressive substances and any other materials that could contaminate the surface of the panels.

Application Precautions:

Metal installed with screw fasteners should be fastened onto a solid backing. Avoid installing directly over green, damp or ACQ lumber, porous insulation or other damaging materials. The use of a moisture barrier (such as Ice & Water Shield) is recommended in such situations. Strong chemicals, fertilizers, manure, some soils, and lime may cause premature deterioration. Installation near such materials is not recommended.

Warning:

Material is slippery and has sharp edges, use extreme caution when handling or installing. Avoid working with sheet metal products on windy days.



										APP
										CHK
										DRW
										DSN
										DRAWING STATUS
										DATE
										(YY/MM/DD)
										#

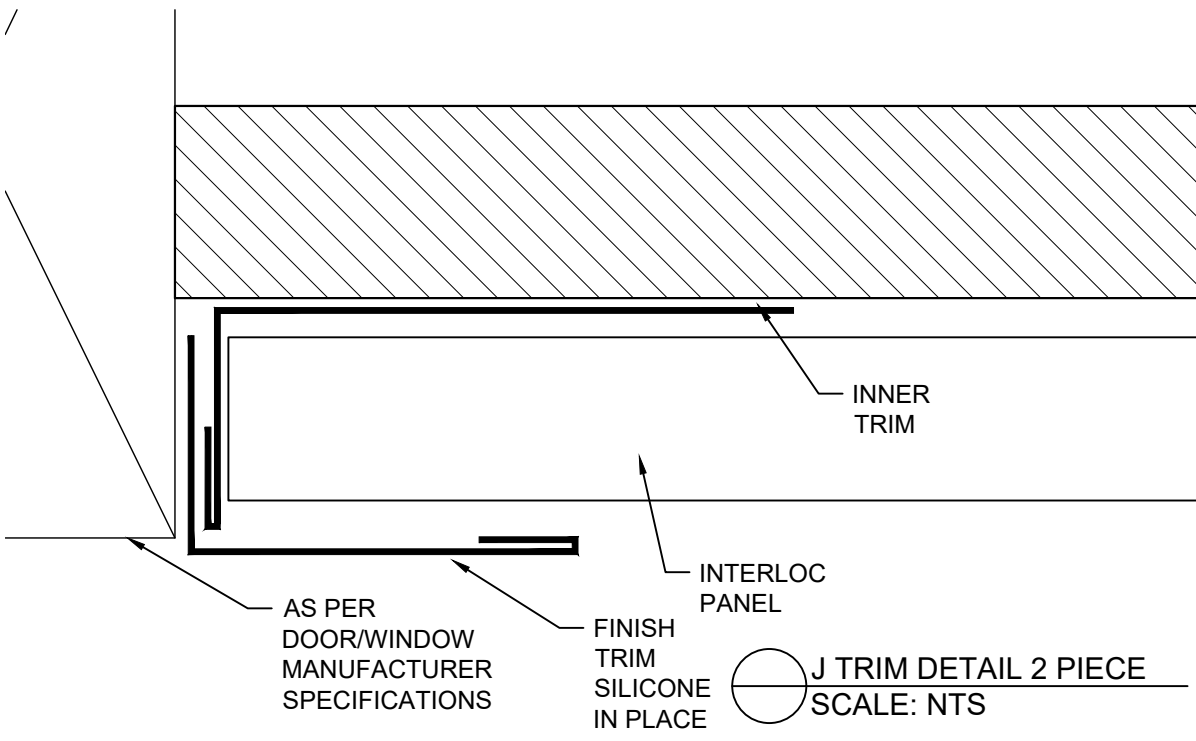
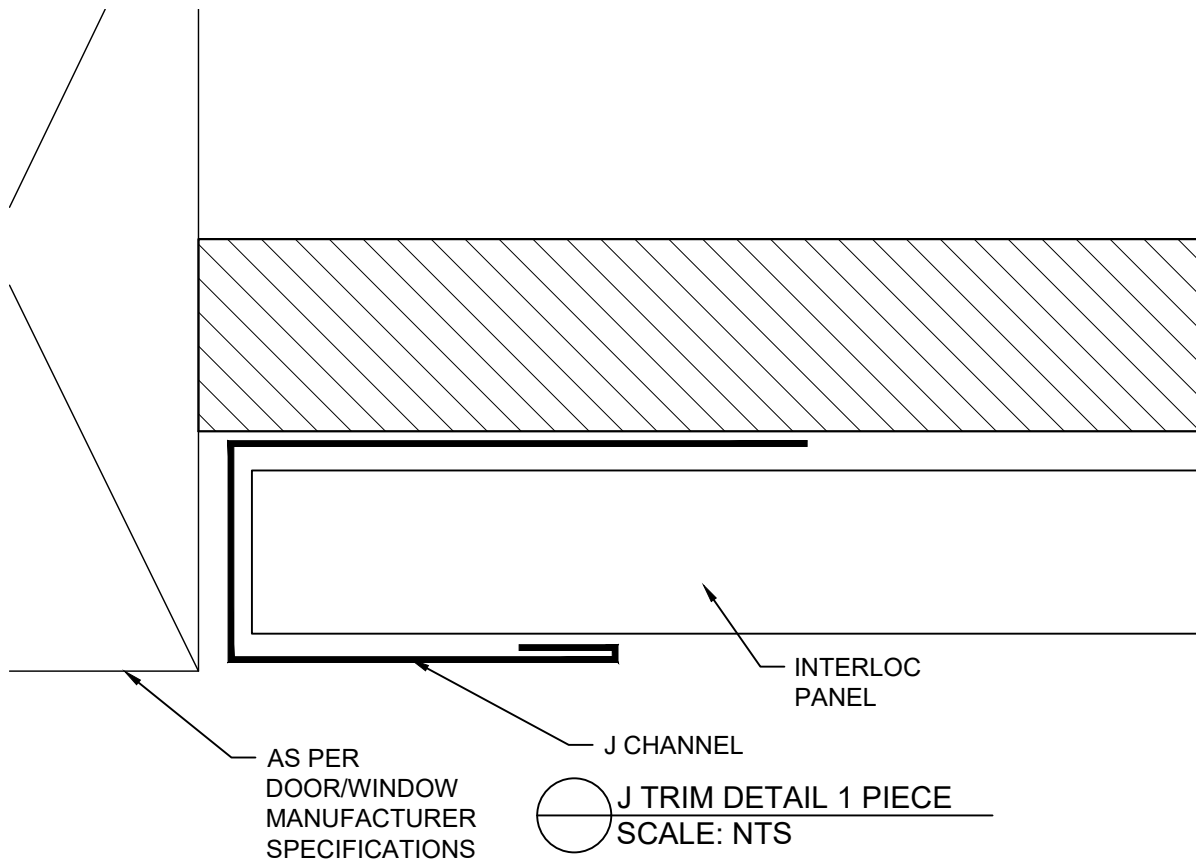
NOTES

This is a copyright drawing and shall not be reproduced in any form without written permission from Forma Steel

Contractor to check and verify all the dimensions before construction, any errors and omissions shall be reported immediately

Do not scale the drawing

All construction shall be in accordance with latest codes.



										APP
										CHK
										DRW
										DSN
										DRAWING STATUS
										DATE
										(YY/MM/DD)
										#

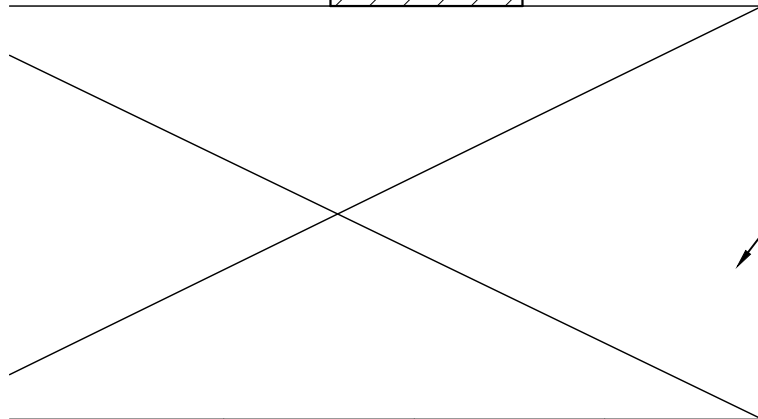
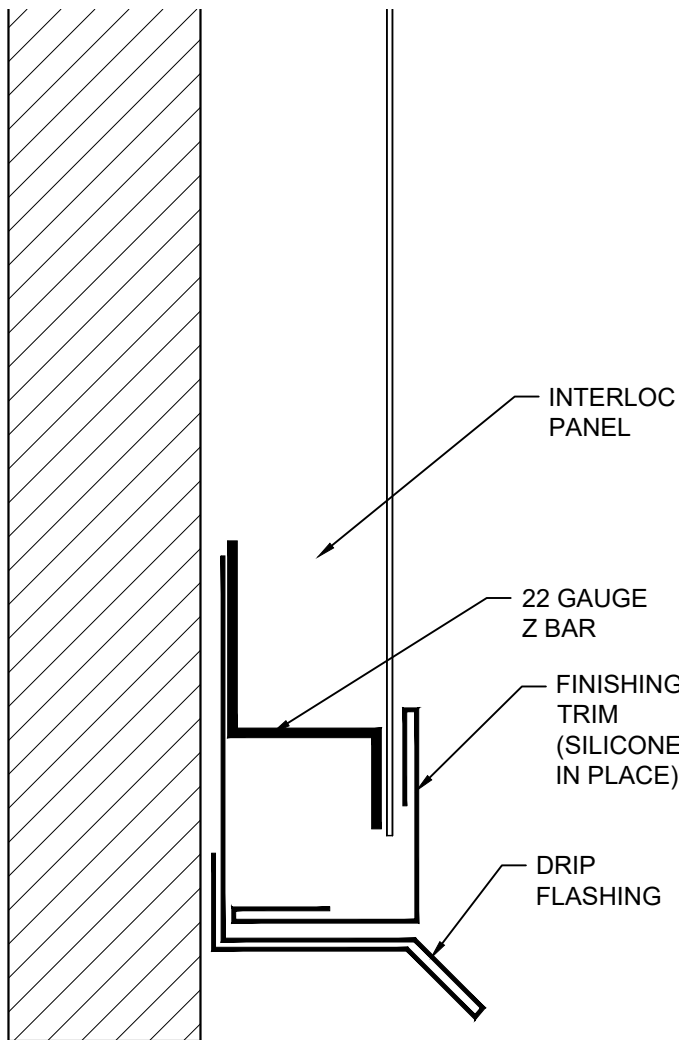
NOTES

This is a copyright drawing and shall not be reproduced in any form without written permission from Forma Steel

Contractor to check and verify all the dimensions before construction, any errors and omissions shall be reported immediately

Do not scale the drawing

All construction shall be in accordance with latest codes.



AS PER
DOOR/WINDOW
MANUFACTURER
SPECIFICATIONS

⊙ **HEADER DETAIL**
SCALE: NTS

										APP
										CHK
										DRW
										DSN
										DRAWING STATUS
										DATE
										(Y/M/A)/DD
										#

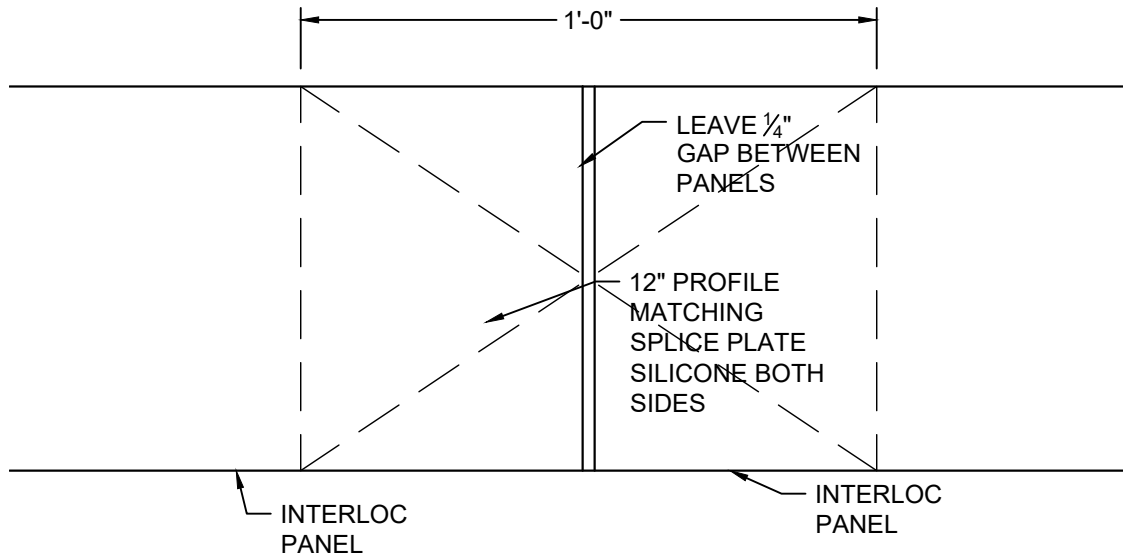
NOTES

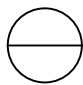
This is a copyright drawing and shall not be reproduced in any form without written permission from Forma Steel

Contractor to check and verify all the dimensions before construction, any errors and omissions shall be reported immediately

Do not scale the drawing

All construction shall be in accordance with latest codes.




SPLICE DETAIL
 (ELEVATION VIEW)
 SCALE: NTS

										APP
										CHK
										DRW
										DSN
										DRAWING STATUS
										DATE
										(Y/M/D)
										#

NOTES

This is a copyright drawing and shall not be reproduced in any form without written permission from Forma Steel

Contractor to check and verify all the dimensions before construction, any errors and omissions shall be reported immediately

Do not scale the drawing

All construction shall be in accordance with latest codes.